

Anytime · Anywhere · Anyone

Easy to use the EV Charging Infrastructure



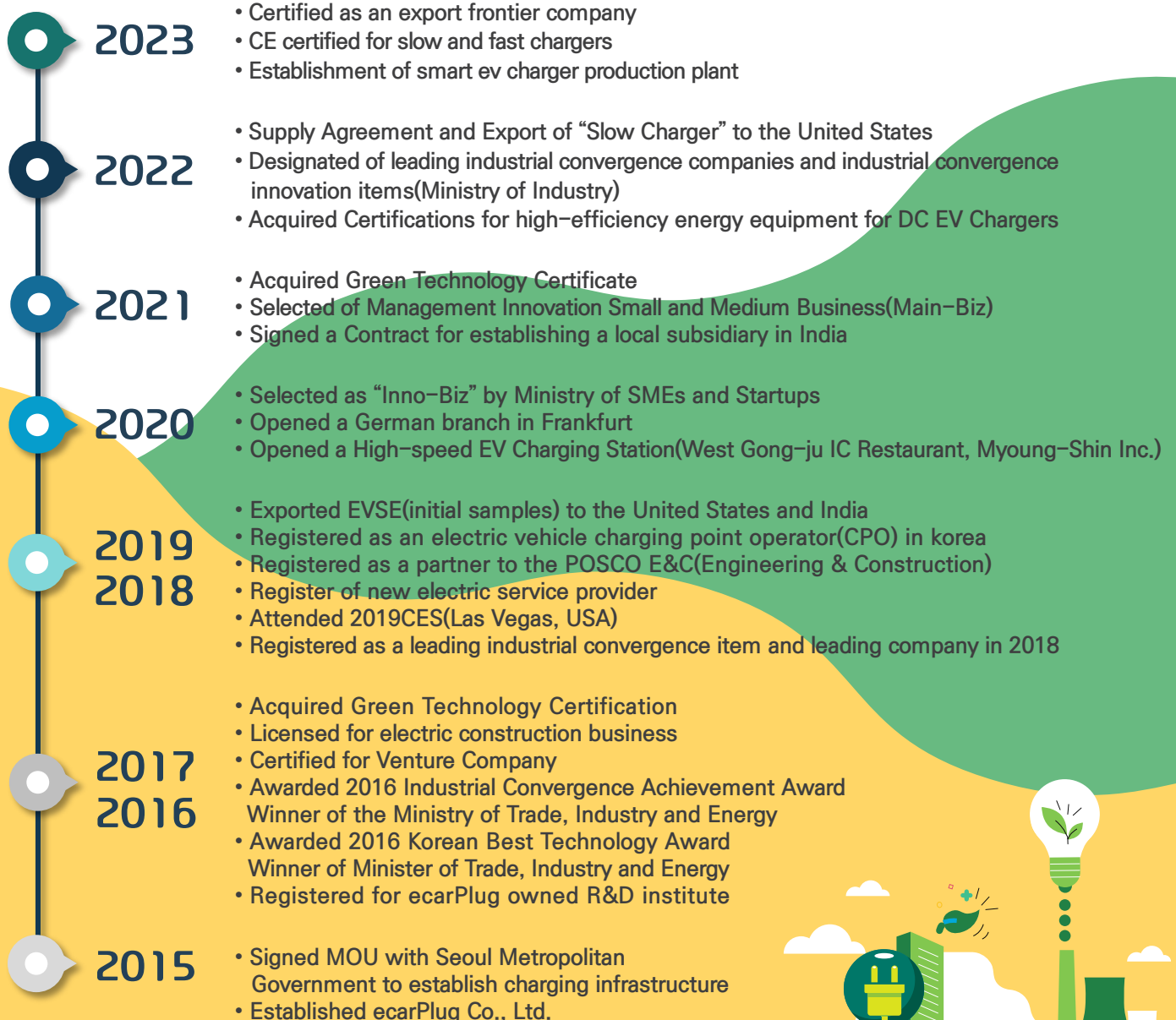


ecarPlug Co. Ltd. focuses on electric vehicle charging system and related businesses based on ICT technology including slow/fast charging devices. Our main products are 7kW / 14kW, 11kW / 22kW AC Chargers, 30kW / 50kW / 100kW DC Chargers certified by Korean government Institute and has got CE mark.

Recently 200kW DC Fast Charger and Mobile Charger are developed and released. evRang electric vehicle charger is the world first new concept model that controls, measures, and pays through Smartphone. We cooperate global electric vehicle manufacturers, EV charging service providers, and Korean Government, the Ministry of Environment, as an official service provider.

We, ecarPlug will contribute to growth of Electric vehicle market and the related industry by introducing new concepts of electric charging and management service/system continuously based on our top notch ICT capability in the future.

Company Profile



Business Information

- Fast Charger
- Slow Charger
- Portable Charger
- Street light Pole Mounted Charger
- Wall-Mounted Type Charger

EV Charger Development & Manufacturing

- Installation of EV Chargers
- Electrical Cabling & Piping Work

EV Charger Installation Business

Charging Service Business

- Development of Charging Service management Platform
- Consignment Operation Business for EV Charger Operation & Management
- EV Charging Service
- EV Charging with ESS

Software Development

- Firmware for EV Chargers
- Mobile Applications(App) for EV Chargers
- EV Charging Payment System
- Development of EV Charge Management Platform



Patent / Certification

[Authentication]

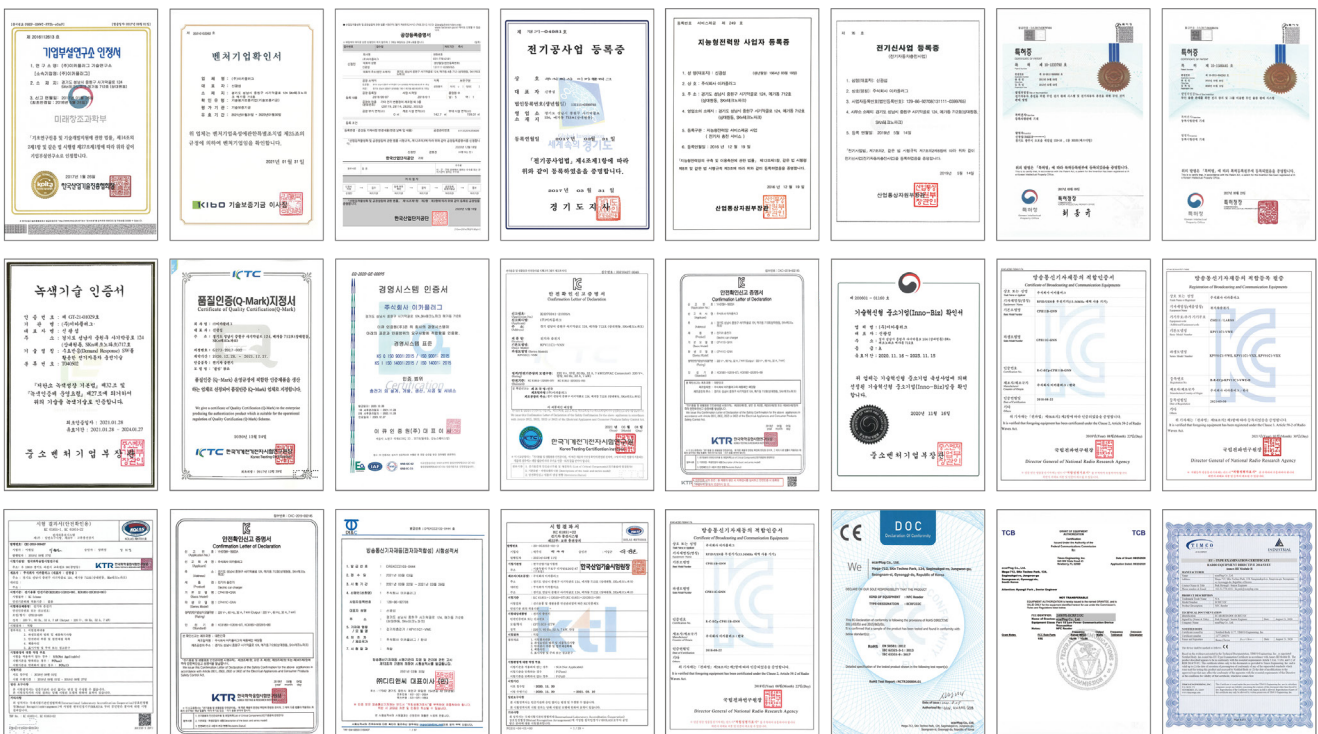
- Venture Business Certificate
- Electrical Work Certificate
- CPO(Charging Point Operator) Certificate
- Factory Registration Certificate
- Smart Grid Certificate
- Green Technology Certificate
- Quality Certificate
- Risk Assessment Certificate
- KC Certificate
- Certificate of conformity for Broadcasting Communication
- Electromagnetic Compatibility Certificate
- Wireless Electromagnetic Compatibility Certificate
- CE, UL, RoHS Certificate
- ISO Authentication Certification
- Inno-Biz Certification and others

[Patent]

- Earth Leakage Breaker Automatic Recovery Patent (10-2034675)
- Dual Communication path multiplexing device and method patent(10-19539901)
- Other 24 patents including Disaster Recovery and Power Distribution Patents (Domestic & Overseas)

[Award]

- Awarded 2016 1st Awards for Korea Technology by Ministry of Trade, Industry and Energy
- Awarded 2016 Merit of Industrial Convergence by Ministry of Trade, Industry and Energy
- Awarded 2019 Leader for Economic and Industrial Sector by Ministry of Trade, Industry and Energy



Slow Charger

AC Single Phase 220V, 7kW, 14kW / 11kW, 22kW



CPx

7kW / 14kW / 11kW / 22kW



BKx

7kW / 14kW



- Real-time user authentication and billing / payment support using LTE Modem
- EV charger's control and pay for charging through smartphone as a remote control
- Support and provide Smartphone App(evRange)
 - Real-time charger location information and charging status information
 - Charging management, charging unit price, charging amount and charging information
- Support dual charging for 2 vehicles
- Support for various control system methods: Local control, central control system
- Automatic recovery function for earth leakage(Patent)
- Improve reliability of charging infrastructure by dual communication network(Patent)

		Slow Charger (CPx)	Slow Charger (BKx)
Rated	Input	Single Phase AC 220V, 32A(7kW), 64A(14kW), 48A(11kW), 96A(22kW)	
	Output	Single Phase AC 220V, 7kW(1ch), 14kW(2ch) / 11kW(1ch), 22kW(2ch)	
Dimension (WxD / WxHxD)		420 X 120(mm)	300 X 420 X 115(mm)
User Interface		LED Display for Charging Information Voice Guidance	7" LCD Display for Charging Information Voice Guidance
Payment Method		RFID, Web, Smartphone App	RFID, Web, Smartphone App, Credit Card
Communication		LTE Modem, Bluetooth, WiFi, LAN	

*Registered to Ministry of Environment and Public Procurement Service of Korea

*EV Charger Stand is an option.

AC 3Phase 380V, 30kW / 50kW / 100kW / 200kW

Fast Charger



**EPM
(30kW)**



**EPFx
(50kW/100kW)**



**EPFx
(200kW)**

- Easy installation and maintenance due to highly space-utilized and simple
- Compact and Slim(290mm) comparing to competitors' DC Fast Chargers
- Adopt Dual operation and distributed control
 - Easy to change for Charging Capacity
 - Support dual charging for 2 vehicles
- Charging method: DC Combo1&2, DC CHAdeMO
- Higher reliable charging Infra via duplicated communication network(Patent)
- Various payment methods
 - Credit card, Membership card, Web, Smartphone App
 - Barcode, QR, MST

		30KW	50KW	100KW	200KW
Rated	Input	AC 380V / 50A	AC 380V / 81A	AC380V / 162A	AC380V / 320A
	Output	DC 200 -1,000V / 30kW(Max)	DC 200 -1,000V / 50kW(Max)	DC 200 -1,000V / 100kW(Max)	DC 200 -1,000V / 200kW(Max)
Dimension (WxHxD)		480 x 700 x 280(mm)	700x 1700 x 290(mm)		600 x 1830 x 800(mm)
User Interface		8" Color Touch LCD	12.1" Color Touch LCD		24" Color Touch LCD
Payment Method		RFID, Web, Smartphone App, Credit Card			
Communication Method		LTE Modem, Bluetooth, WiFi, LAN			

*Registered to Ministry of Environment and Public Procurement Service of Korea

*EV Charger Stand is an option.

Home Charger

Home Charger

AC Single Phase 220V, 5kW / 7kW



- Easy to install and operate for Private Home Charger
- Control all the functions of EV Chargers using client's smartphone
- User authentication and charging control using RFID Card and smartphone(Bluetooth Communication)
- Reservation function for charging and Automatic charging mode

Speciation		
Rated	Input	Single Phase AC 220V, 23A(5kW), 32A(7kW)
	Output	Single Phase AC 220V, 5kW, 7kW
Dimension (WxHxD)		211 x 345 x 122(mm)
User Interface		LED(Status Display and Charging Information)
User Authentication		Loyalty Card(RFID),Non-Member(Web), Smartphone App
Communication Method		Bluetooth, WiFi

Street Light Pole-Mounted Charger

AC Single Phase 220V, 3.5kW / 7kW

- Easy to install in a street light pole
- Higher reliable charging Infra via duplicated communication network(Patent)
- Shock-resistant enclosure
- Smartphone App-based billing management system

Speciation		
Rated	Input	Single Phase AC 220V, 16A(3.5kW), 32A(7kW)
	Output	Single Phase AC 220V, 3.5kW, 7kW
Dimension (WxHxD)		110 x 325 x 100(mm)
User Interface		1.3 inch OLED (Status & Charging Information Display)
User Authentication		Loyalty Card(RFID),Non-Member(Web), Smartphone App
Communication Method		LTE Modem, Bluetooth, WiFi, LAN



Special Charger

Portable Charger

AC Single Phase 220V, 3.5kW / 7kW

KPV

Standard



KPV

Premium



- Charging using a pre-installed general Electric outlet
- Possible for reservation charging and selectable charging capacity
- Control and manage using smartphone App(Premium)

Speciation		
Rated	Input	Single Phase AC 220V, 16A(3.5kW), 32A(7kW)
	Output	Single Phase AC 220V, 3.5kW, 7kW
Dimension (WxHxD)		Standard Model 87 x 198.5 x 58(mm) / Premium Model 278 x 81(mm)
User Interface		2inch OLED, Smartphone App
User Authentication		Button(Standard) / Bluetooth, Smartphone App(Premium)
Communication Method		Bluetooth, WiFi

Charging Socket

AC Single Phase 220V, 3.3kW

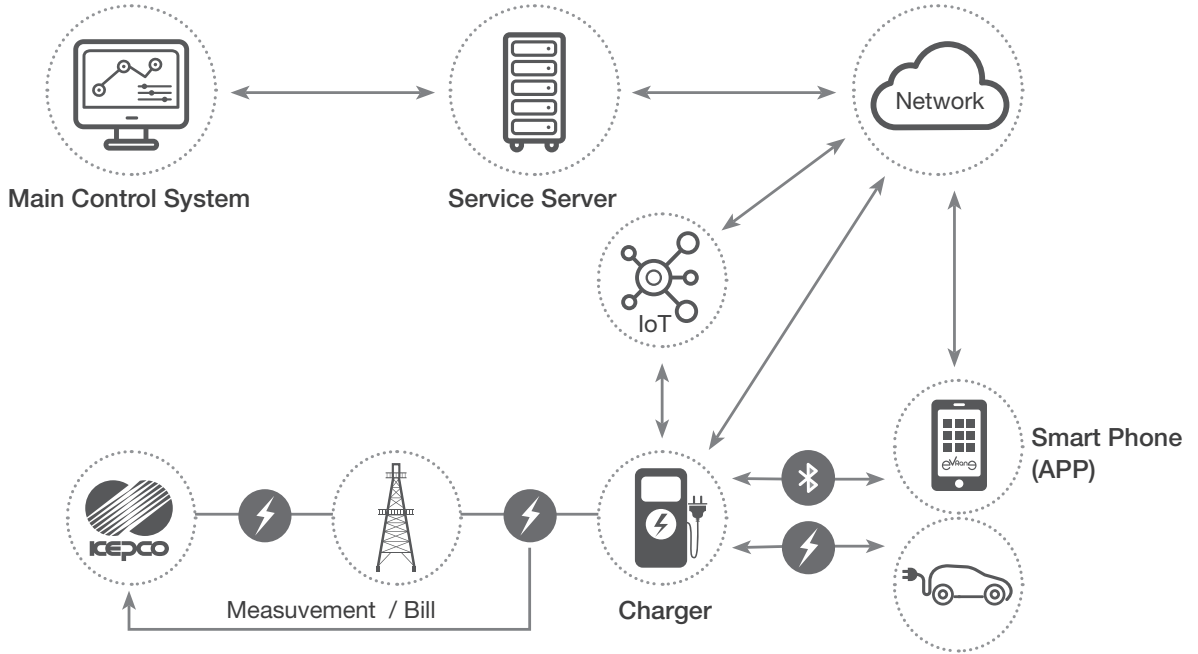
- Available for all mobility products, including electric vehicles
- Easy to install and take a small space (wall-mounted)
- Compatible with domestic and international portable chargers
- Easy to control the power through Bluetooth
- Shock-resistant enclosure
- Improve reliability of charging infrastructure by dual communication network (patent)





Speciation		
Rated	Input	Single Phase AC 220V, 16A(3.3kW)
	Output	Single Phase AC 220V, 3.3kW
Dimension (WxHxD)		110 x 260 x 85(mm)
User Interface		1.3 inch OLED (Status & Charging Information Display)
User Authentication		Loyalty Card(RFID), Smartphone App
Communication Method		LTE Modem, Bluetooth, WiFi, LAN



CSP (3.3kW)

evRang 이비랑 Charging Service Diagram



-
- | | | | |
|---|---|---|--|
| 
Main Control System
<ul style="list-style-type: none"> • Management of Chargers & Users | 
Service Server
<ul style="list-style-type: none"> • User Authentication • Charging & Payment • Charging Information • Charger Location | 
Charger
<ul style="list-style-type: none"> • Various Interfaces • Power Supply Control • Payment System Included | 
APP
<ul style="list-style-type: none"> • Charging History • Charger Location • Payment System • Smart Charging Function |
|---|---|---|--|

“ Visit our social network services”



ecarPlug 이카플러그



@ecarplug_kr



ecarPlug Co.,Ltd.

M-713, SKn Techno-Park, 124, Sagimakgol-Ro, Jungwon-Gu, Seongnam-Si, Gyeonggi-Do, South Korea
 Tel : +82-31-778-6181 Fax : +82-31-778-6182 A/S : +82-1833-4577
 Website : www.ecarPlug.com / www.evRang.com
 E-mail : info@ecarplug.com